

Condé Nast Traveler

SEVEN WINNING
TRAVEL APPS

TRUTH IN TRAVEL

JANUARY 2011

20-PAGE
SPECIAL

GOLD LIST WORLD'S BEST

504

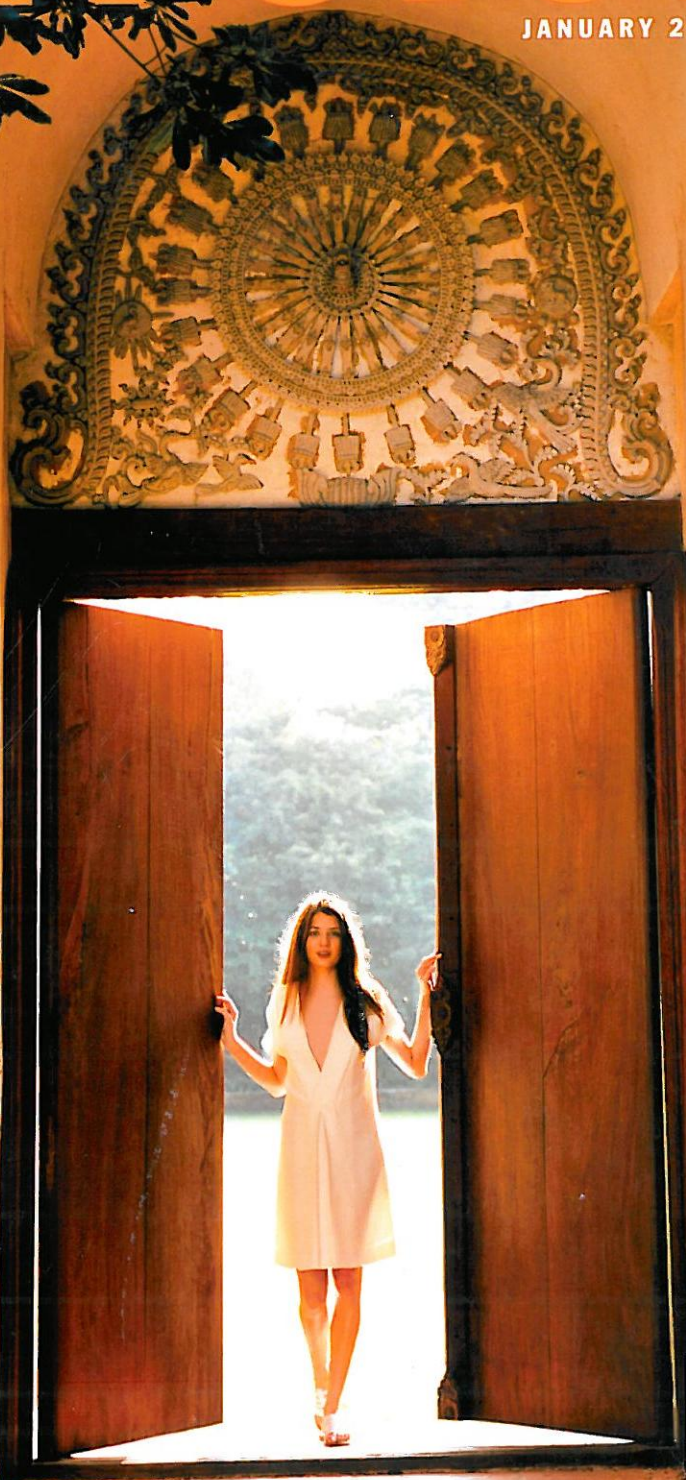
HOTELS,
RESORTS,
CRUISE LINES

PLUS

EUROPE'S
RISING STAR

SOUTH
AMERICA'S
SECRET
PARADISE

INDIA'S
MAGIC CITY



\$4.99US \$5.99FOR
01 >



08634
0 757358 3

Life Heritage Resort, Hoi An 89.7
 95.0 92.5 84.2 97.5 97.4 70.3

Evason Ana Mandara, Nha Trang 90.2
 91.2 88.2 85.3 94.1 91.2 91.2

AUSTRALIA AND PACIFIC NATIONS

AUSTRALIA

Voyages Longitude 131°, Ayers Rock 90.3
 83.3 82.8 86.2 100 96.6 93.1

Henry Jones Art Hotel, Hobart 88.1
 85.2 85.2 84.6 92.6 92.6

Blue Sydney (Taj), Sydney 90.4
 88.9 85.2 88.9 96.3 92.6

Located within a former wharf building next to the Royal Botanic Gardens, Blue has "funky and fun rooms" with views of Sydney Harbour or Woolloomooloo Bay Village. They're decorated in blues with chocolate brown suedette furnishings. Blue Café, in the heart of the wharf, offers breakfast and bistro fare; unwind with a cocktail on the banquettes at Water Bar.

Park Hyatt, Sydney 89.7
 90.7 88.1 85.6 93.8 90.1

Sydney Harbour Marriott at Circular Quay, Sydney 89.5
 90.6 91.8 77.0 96.2 91.1

FRENCH POLYNESIA

Le Méridien, Bora Bora 88.6
 91.4 88.6 85.7 91.4 88.6 85.7

Sofitel Bora Bora Marara Beach and Private Island, Bora Bora 88.6
 100 85.7 50.0 100 100 100

Te Tiare Beach Resort, Huahine 88.2
 86.2 93.1 85.7 96.6 89.7 76.9

Wooden walkways connect the mainland to thatched-roof bungalows that sit "above the clearest water you'll ever see." Casual accommodations are mostly on land, with high ceilings and open-air designs; in over-water suites, jump off the sundeck into the lagoon. French, Polynesian, and international fare at Ari'i includes mahimahi infused with lemongrass and ginger. "Staff always wear a smile."

Le Taha'a Island Resort & Spa, Taha'a 91.1
 97.8 88.9 80.0 95.6 97.8 86.7

NEW ZEALAND

Lodge at Kauri Cliffs, Matauri Bay 98.4
 100 100 96.9 93.8 100 100

This oceanfront newcomer with a raft of perfect scores is "stunning, as if you were airlifted to heaven." Plantation-style buildings have perfect-scoring suites where ceiling fans, light colors, and subtle patterns create a country feel. The restaurant changes its menu daily—"you'll want to stay all day and just order another bottle of wine" on the outdoor terrace. Perfect-scoring staff include caddies with "knowledge of many topics, not just golf." On the challenging course (one of the perfect-scoring activities), "we played four times and only once came close to another group."

Huka Lodge, Taupo 95.5
 100 100 100 90.9 100 81.8

AFRICA & THE MIDDLE EAST

Safari camps in stunning natural settings are the top draw for travelers to these regions

WATCHING GIRAFFES lapping from a water hole, hippos rolling in the mud, and lion cubs brawling are

the irresistible pulls of the safari experience, and these mementos are what keep travelers returning year after year to the Gold List camps. What is changing is where they are going. South Africa, the traditional leader in the safari vacation, can no longer claim to be the undisputed king of the jungle: It faces stiff competition from neighboring Botswana, whose nine camps on this year's list all score above 90. For urbanites visiting these regions, the multiculti city of Cape Town—outlandishly set between Table Mountain and the South Atlantic Ocean—remains the go-to destination for hotels nonpareil.



A flare for drama in the lobby of Dubai's 28-story Burj Al Arab: More than 17,000 square feet of 24-karat gold leaf helped earn the resort a 96.6 for design.

BOTSWANA

Savute Elephant Camp, Chobe National Park 91.2
 95.0 90.0 87.5 90.0 95.0 89.5

DumaTau Camp, Linyanti Wildlife Reserve 93.3
 80.0 100 88.6 100 94.3 97.1

Khwai River Lodge, Moremi Game Reserve 91.4
 96.7 93.5 83.9 93.5 90.3 90.3

Mombo and Little Mombo Camps, Moremi Game Reserve 98.4
 98.1 98.1 96.3 100 98.1 100

Sanctuary Chief's Camp, Moremi Game Reserve 90.5
 90.2 94.1 92.2 90.2 88.2 88.2

Camp Okavango, Okavango Delta 91.0
 85.7 96.3 89.3 92.9 85.7 96.4

Jao Camp, Okavango Delta 94.3
 94.3 91.4 85.7 100 97.1 97.1

Sandibe Okavango Safari Lodge, Okavango Delta 93.6
 88.5 92.3 92.3 96.2 96.2 96.2

2011 GOLD LIST

KEY TO SYMBOLS

- Rooms
- Service
- Food
- Location
- Design
- Activities

SCORES IN RED = OVERALL

NEW New to Gold List

For full reviews of every hotel and resort on the 2011 Gold List, with reader quotes, go to cntraveler.com/goldlist. (Or download our soon-to-be-released iPhone or iPad app: Condé Nast Traveler's 2011 Gold List.)

Vumbura Plains, Okavango Delta 90.3
 91.7 79.2 83.3 100 100 87.5

EGYPT

Four Seasons Cairo at Nile Plaza, Cairo 90.5
 93.7 91.6 82.6 93.8 91.0

Four Seasons Cairo at the First Residence, Cairo 91.1
 95.5 91.9 86.2 91.9 90.0

Four Seasons, Sharm El Sheikh 96.3
 97.8 95.6 93.3 95.6 97.8 97.6

KENYA

Amboseli Serena Safari Lodge, Amboseli National Park 87.3
 84.8 90.3 80.2 92.9 88.5 86.8

Bateleur and Kichwa Tembo Camps, Masai Mara Game Reserve 87.7
 83.3 92.9 83.3 92.9 83.3 90.5

Fairmont Mara Safari Club, Masai Mara Game Reserve 88.5
 92.3 88.5 76.9 88.5 92.3 92.3

Set along a curve of the Mara River, this tented property offers guests the chance to spy gazelles and lions. The Masai colors are